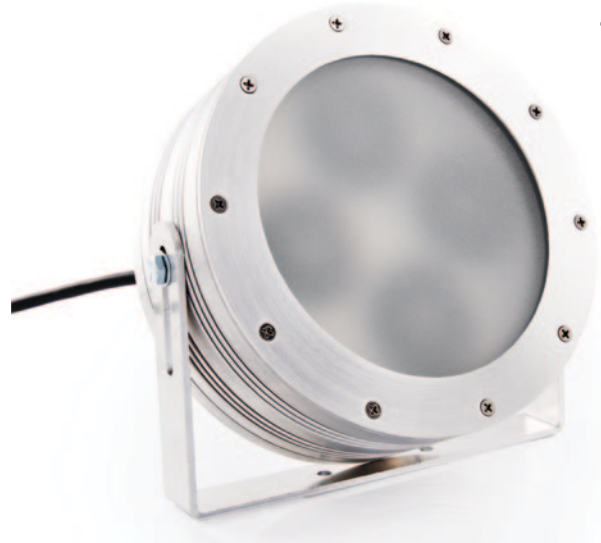




KEY FEATURES

- Hazardous location approved
- Thermally managed for maximum longevity
- Robust construction suitable for outdoor applications
- Operational and environmental benefits of LED technology
- Lifespan up to 100 000 hours



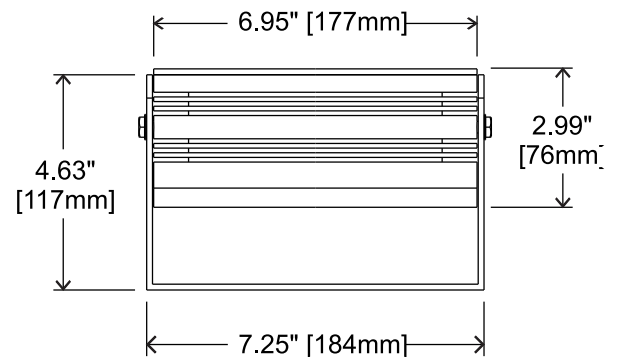
MODEL NUMBER SELECTOR Example: XCANLEDDC-RGB-W-ALU

MODEL	COLOR	OPTIC	FINISH
XCANLEDDC	RGB		
	RGB- Color Changing	W -Wide WF -Wide Frosted	ALU-Aluminium CUS -Custom <i>See pg2 for custom finishes</i>

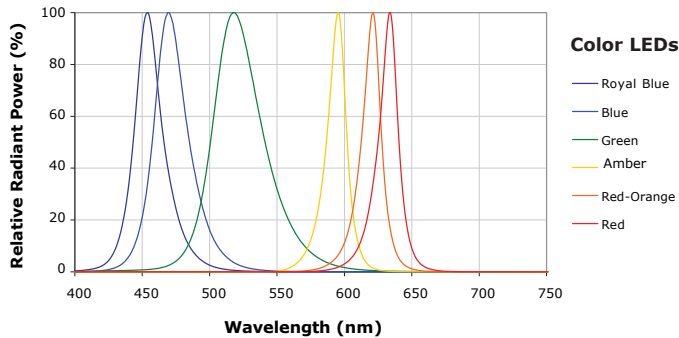
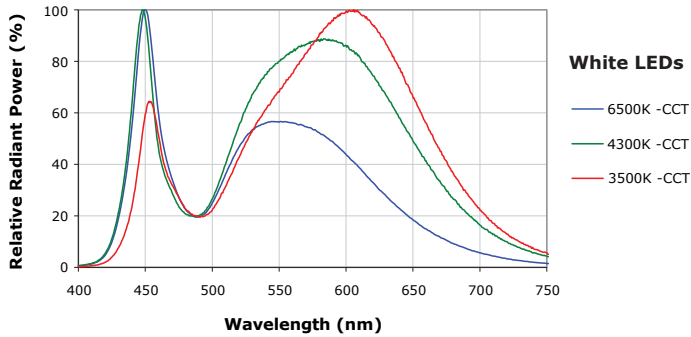
TECHNICAL SPECIFICATIONS / MAXIMUM RATINGS

HOUSING	Aluminum
MOUNTING	1/4" - 20 Mounting Screws Aluminum 1" Mounting Yoke
VOLTAGE MAXIMUM	36 VDC
POWER	32.5 Watts Maximum
CURRENT	3 channels @ 0.350 mA each
CONNECTIONS	6 ft Flying Multi conductor Lead
TEMPERATURE RANGE	-40°C – +85°C
TYPICAL CASE TEMPERATURE	~20°C Above Ambient Temperature
CERTIFICATIONS	Certified To CSA 22.2 No. 250.0 , Conforms To UL 1598 Standard
INGRESS PROTECTION	IP66
WAVELENGTH COLOR	Blue: 460nm Green: 520nm Red: 625nm
LUMENS	1680
WEIGHT	4.5 lb 1.8 kg

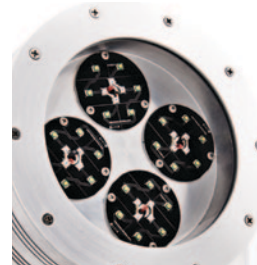
DIMENSIONS



PHOTOMETRICS



WIDE BEAM

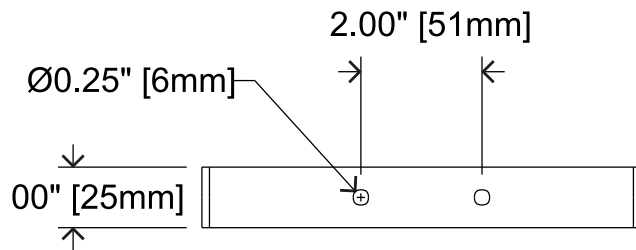


FROSTED LENS



MOUNTING OPTIONS

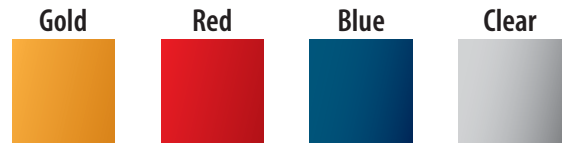
MOUNTING BRACKET



CUSTOM OPTIONS

CUSTOM FINISHES

Anodized Aluminum



Please contact for further options

Powder Coated Aluminum



Please contact for further options