



**KEY FEATURES**

- Designed to retrofit 4 tube, 4 foot florescent troffer fixtures
- Thermally managed for maximum longevity
- Operation and environmental benefits of LED technology
- Available in multiple colored LEDs
- Dimmable option available
- Comes complete with driver
- Typical payback period 1-4 years
- 347 VAC available
- Up to 100 000 hours lifespan typical



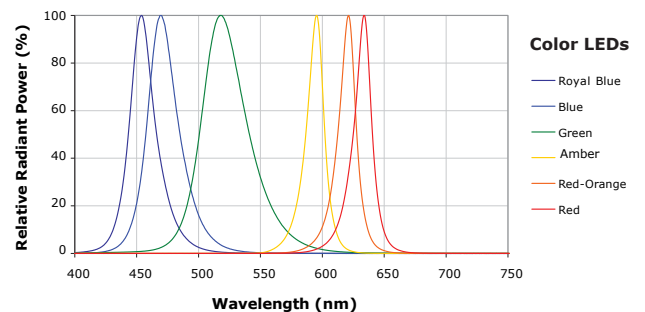
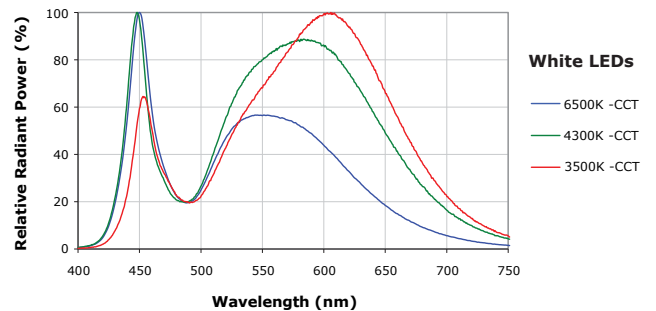
**MODEL NUMBER SELECTOR** Example: BFLED-RET-36-NW-347

MODEL	COLOR	POWER
BFLED-RET-36		
	CW - Cool White NW - Neutral White WW - Warm White CUS - Custom <i>Contact for custom color</i>	100 -100-277VAC 110D -110-230VAC Dimmable 347 -347-480VAC

**TECHNICAL SPECIFICATIONS / MAXIMUM RATINGS**

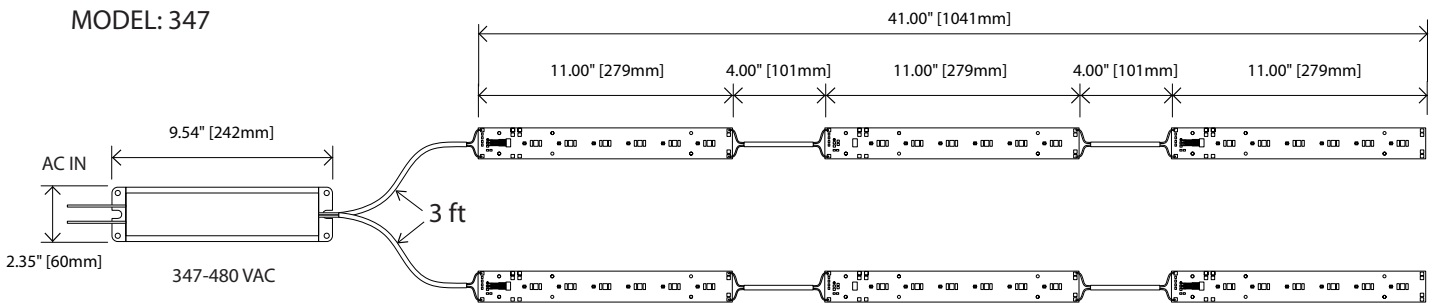
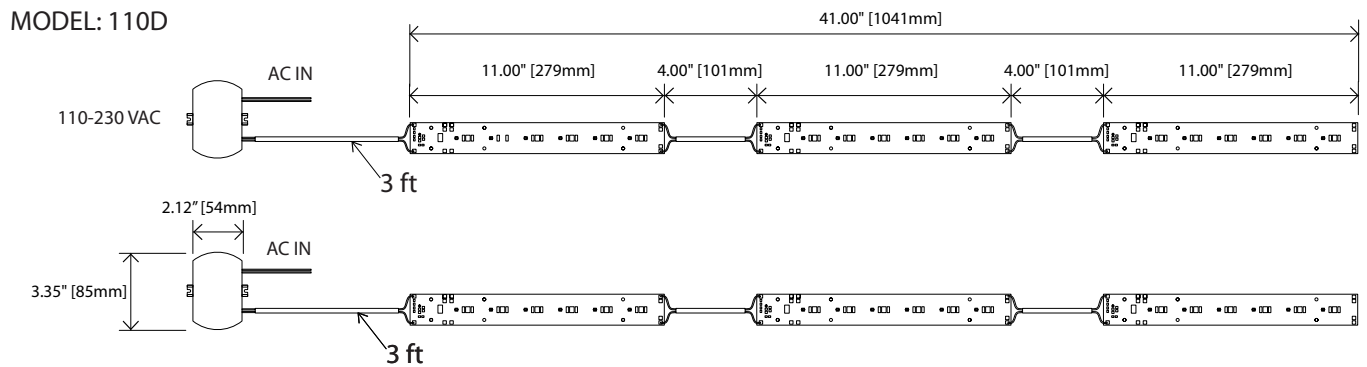
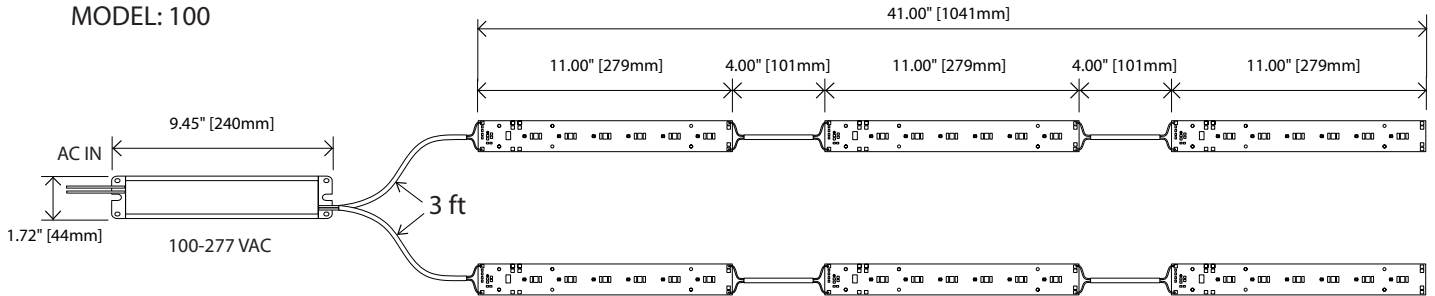
HOUSING	N/A- Coated PCB
MOUNTING	Doublesided thermal tape, #4 screws optional
VOLTAGE MAXIMUM	100: 227VAC   110D: 230VAC   347: 480VAC
TYPICAL INPUT VOLTAGE	100: 100-227VAC   110D: 110-230VAC   347: 347-480VAC
POWER	100: 67W   110D: 48W   347: 56W
CURRENT	100: 2.8A   110D: 2.0A   347: 2.1A
CONNECTIONS	3 foot flying Lead
TEMPERATURE RANGE	-40°C – +85°C
TYPICAL CASE TEMPERATURE	~15°C above ambient temperature
CERTIFICATIONS	Certified To CSA 22.2 No. 250.0 , Conforms to UL 1598 Standard
INGRESS PROTECTION	N/A
COLOR TEMP RANGE	CW: 6500K   NW: 4300K   WW: 3500K
CRI VALUE	CW: 75   NW: 75   WW: 80
TOTAL LUMENS	5460 (CW)
TOTAL SCOTOPIC LUMEN	12012 (CW)
WEIGHT	1.75lb   0.8 kg (including driver)

**PHOTOMETRICS**



NOTE: Where applicable, electrical inspection may be required.

DIMENSIONS



**INSTALLATION INSTRUCTIONS**



**Step 1:**

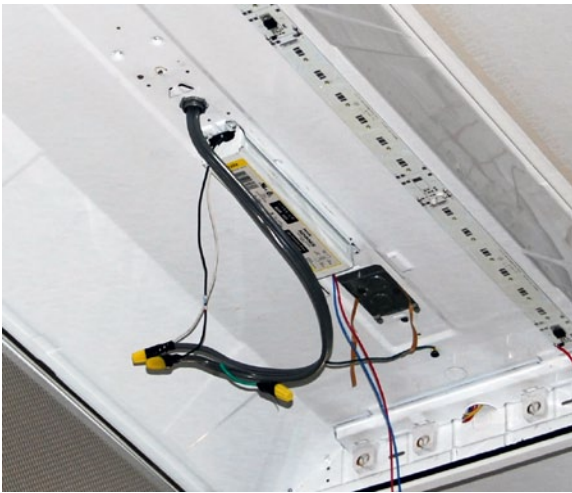
Turn off fixture and disconnect all power connections via electrical breakers or plugs.

**Step 2:**

Open fixture or remove optic lens depending on fixture style and model. Carefully remove florescent bulbs.

**Step 3:**

Remove ballast shroud to expose ballast and wiring. Disconnect existing ballast leads/merrets. Unfasten ballast from fixture.



**Step 4:**

Install new power supply(PS) in same location as previous ballast. The mounting screw locations are generally standard. Use self-tapping metal screws should the location of the power supply mounting locations not align with the fixture.

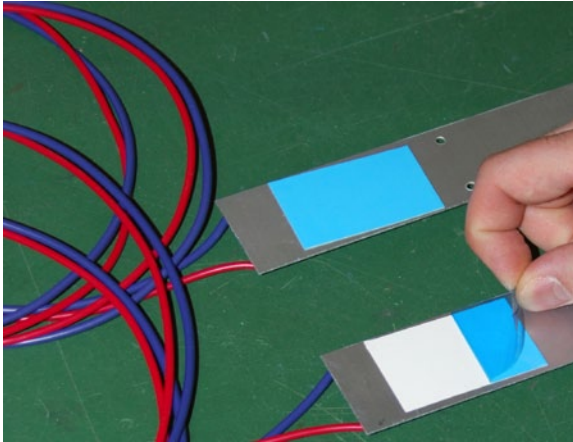
<b>MODEL</b>	<b>AC INPUT</b>	<b>DC OUTPUT</b>
<b>100</b>	Black (Line) White (Neutral)	Red (+) Blue (--)
<b>100D</b>	Brown (Line) Blue (Neutral)	Red (+) Black (--)
<b>347</b>	Blk-ORN (Line) Blk-WHT (Neutral)	Red (+) Blue (--)

Table 1.0

**Step 5:**

Attach the PS's Neutral to the fixture's neutral line. Twist the lines together and then screw on merret as per CSA and electrical standards. Connect the PS Power line to the fixture's Positive line. Twist the lines together and then screw on merret as per CSA and electrical standards. Refer to Table 1.0 for proper connections as per Power Supply model.

## INSTALLATION INSTRUCTIONS



### Step 6:

Prepare troffer surface by scuffing the finish, then wiping to remove dust and debris. Remove protective film from adhesive tape of BFLED-RET-36 fixtures and mount to the interior side of the existing fixture centered where the florescent bulbs were previously located. Be sure to have the ends with wire feeds at same end as the power supply.



### **IMPORTANT:**

**Press on the boards for 5 seconds along the entire length. This is to ensure proper long term adhesion and thermal transfer to the fixture. DO NOT PRESS ON THE LED LENSES!**

### Step 7:

Connect each of the BFLED-RET-36 to the PS's wire connection terminals. Refer to Table 1.0 for proper connections as per Power Supply model. Consolidate loose wiring and attach to case with cable tie mounts ensuring no interference with decorative shroud.

### Step 8:

Reinstall the decorative shroud, being careful not to pinch any of the wires. Insert optic lens or close fixture.

### Step 9:

Turn on breakers or plug in fixture and turn lights on.

### Step 10:

Return bulbs and ballast to the proper recycling facility.

